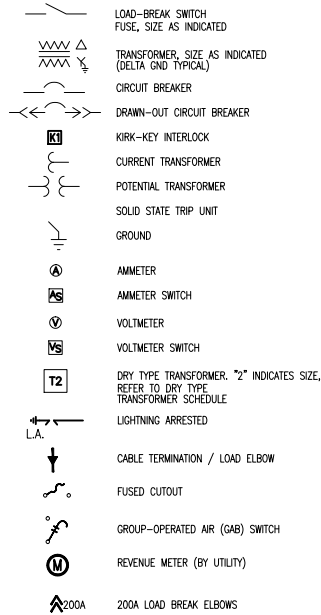


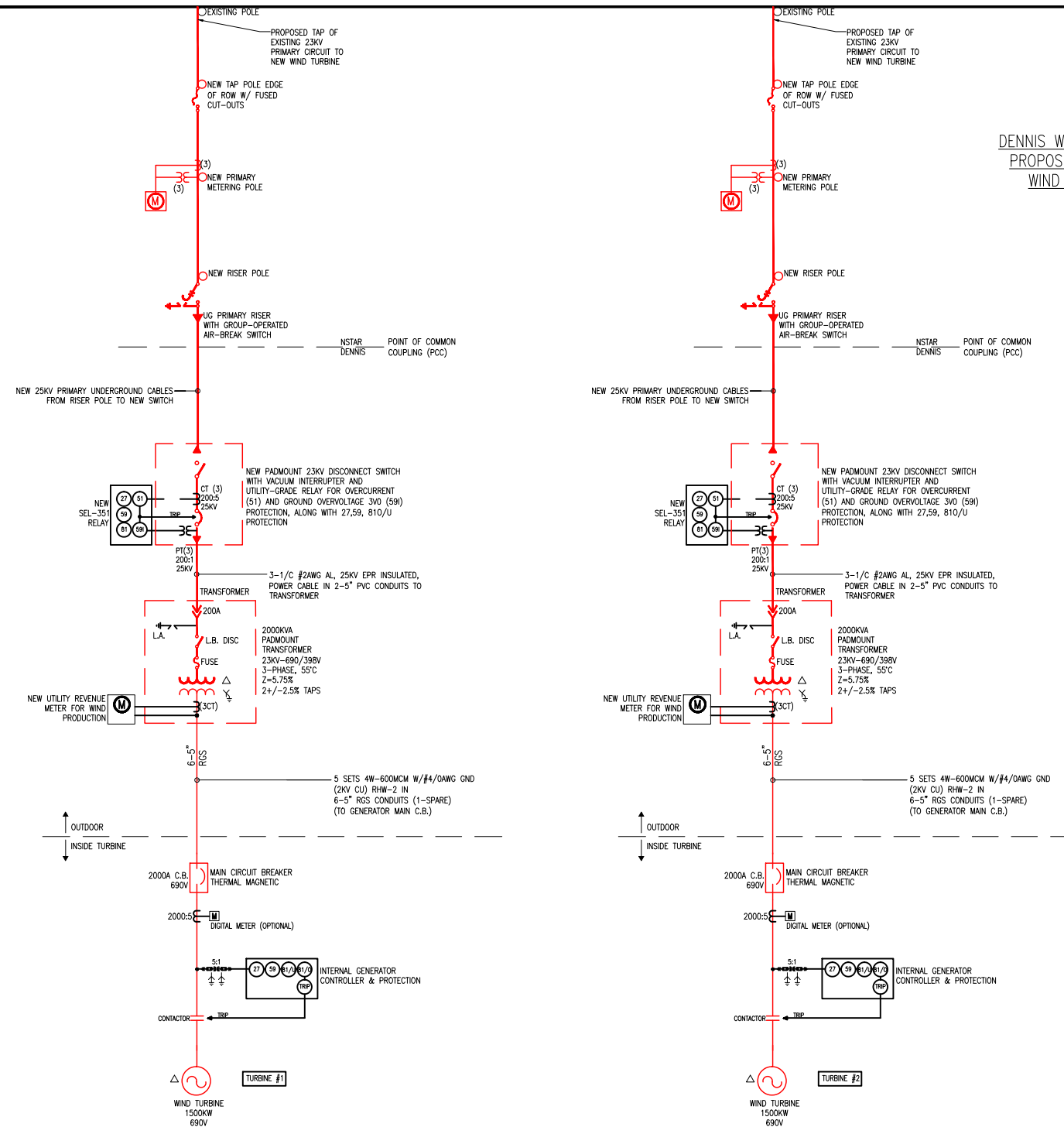
**CONDUIT INSTALLATION NOTES:**

1. THIS DRAWING IS BASED ON INFORMATION AND DRAWINGS PROVIDED BY CLIENT. THIS DRAWING IS FOR INFORMATION ONLY. THE CONTRACTOR SHALL VERIFY ALL LOCATIONS, DEVICES, MATERIALS AND EQUIPMENT PRIOR TO MAKING ANY MODIFICATIONS OR ADDITIONS.
2. ALL MATERIALS FURNISHED UNDER THIS CONTRACT SHALL BE IN ACCORDANCE WITH THE LATEST APPLICABLE STANDARDS OF ANSI, NEMA, OSHA, UL NFPA-70, AND THE MASS ELECTRICAL CODE WITH REGARDS TO MATERIAL, DESIGN, CONSTRUCTION AND TESTING.
3. CONTRACTOR SHALL NOTIFY DIG SAFE PRIOR TO ANY EXCAVATION.
4. LOCATIONS OF WATER, SEWER, ELECTRIC AND GAS ARE APPROXIMATE AND FOR REFERENCE ONLY. CONTRACTOR SHALL INSPECT SITE AND FOLLOW ALL DIG SAFE MARKINGS. CONTRACTOR SHALL NOTIFY ALL UTILITIES PRIOR TO EXCAVATION.
5. CONTRACTOR SHALL RESTORE ALL DISTURBED AREAS TO ORIGINAL CONDITIONS.
6. CONTRACTOR TO PERFORM ALL WORK AS SHOWN.

**ONE LINE POWER DIAGRAM**



DEVICE NO.	DESCRIPTION
27T	TIME UNDER VOLTAGE RELAY
27I	INSTANTANEOUS UNDER VOLTAGE RELAY
32F	FORWARD OVER POWER RELAY
32R	REVERSE POWER RELAY
46	NEGATIVE PHASE SEQUENCE OVERCURRENT RELAY
47	REVERSE PHASE VOLTAGE RELAY
50/51	INSTANTANEOUS / TIME OVERCURRENT RELAY
51N	GROUND OVERCURRENT RELAY
59I	INSTANTANEOUS OVERVOLTAGE RELAY
59T	TIME OVERVOLTAGE RELAY
60	VOLTAGE BALANCE RELAY
81/O	OVER FREQUENCY RELAY
81/U	UNDER FREQUENCY RELAY



DENNIS WATER DISTRICT  
PROPOSED 2-1.5MW  
WIND TURBINES

No.	DATE	DESCRIPTION	No.	DATE	DESCRIPTION
REVISIONS		REVISIONS			

PROJ. MANAGER:	SCALE:
CHIEF DESIGNER:	HORIZ.: NONE
REVIEWED BY:	DATE:
	VERT.:
	DATUM:
	HORIZ.:
	VERT.:
	GRAPHIC SCALE

**POWER ENGINEERS, LLC**  
 415 Boston Turnpike, P.O. Box 808  
 Shrewsbury, MA 01545-0608  
 (508) 612-0382  
 www.PowerEngineersLLC.com

*Electrical Engineering, Power, Lighting,  
Technical Studies and Utility Consulting*

DENNIS WATER DISTRICT  
**PROPOSED WIND TURBINE PROJECT**  
 ONE-LINE INTERCONNECTION DIAGRAM - 1500KW  
 MARSTONS MILLS MASSACHUSETTS

PROJ. No.: 094M  
 DATE: MAY 2010

**E-1**

SIZE: B REV: 0