

Dennis Water District

Town of Dennis

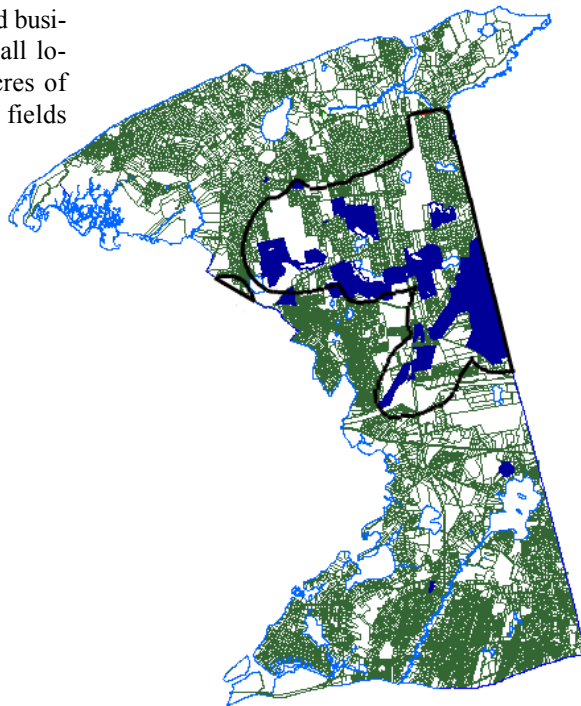
2008 Annual Water Quality Report

MA Public Water Supplier ID # 4075000

Dear Customer: We are pleased to provide you with our latest water quality summary covering the past year. The Safe Drinking Water Act (SDWA) requires that utilities issue an annual "Consumer Confidence Report" to customers in addition to other notices that may be required by law. This report details our sources of water, what it contains, and the problems and risks our testing and treatments are designed to prevent. The Dennis Water District is committed to providing you with the safest and most reliable water supply possible. Informed consumers are our best allies in maintaining safe drinking water.

Our water supply meets all state and federal water quality standards. We encourage public interest and participation in our community's decisions affecting drinking water. The Board of Water Commissioners meets regularly on the first Thursday of each month at 4 p.m. at 80 Old Bass River Road, S Dennis. Meetings are subject to change, so please call ahead to confirm the date and time (508-398-3351). The public is welcome. You are also invited to express your comments or concerns by mailing a letter or sending an email. Please visit our website at www.denniswater.org.

Water Sources In 2008, the Dennis Water District supplied the residents and businesses of the town with 973,701,000 gallons of groundwater pumped from 22 wells all located north of the Mid-Cape Highway. Our wells are situated on more than 1054 acres of watershed property owned or protected by the District. The following is a list of well fields including the wells that operate in those fields.



| | | |
|-----------------------|------------------------|-----------|
| Wells 1, 2, 3, 12, 23 | Old Chatham Road | 2,100 GPM |
| Wells 4, 6, 11, 22 | Old Bass River Road | 1,600 GPM |
| Well 5 | Route 134 | 500 GPM |
| Wells 7, 8, 10 | Airline Road | 1,300 GPM |
| Well 9 | Grassy Pond Road | 600 GPM |
| Wells 14, 15 | Bakers Pond Road | 1150 GPM |
| Well 16 | Timber Lane | 450 GPM |
| Well 18 | Hokum Rock Road | 700 GPM |
| Wells 19, 20 | Setucket Road | 1,400 GPM |
| Main Station | 80 Old Bass River Road | 700 GPM |
| Well 21 | Route 134 | 700 GPM |

Emergency backup supplies would come from surrounding towns if mutual aid was needed. We have three interconnections with the Town of Yarmouth, three with the Town of Harwich and one with the Town of Brewster.

In April of 2008, the District voters accepted a gift of land for watershed protection. The .13-acre parcel is an unbuildable lot on Pilot Drive, East Dennis and abuts land owned by the District.

Dennis Source Water Assessment This assessment was completed by DEP to delineate the boundaries of those areas providing source water to our public water supply wells and identify, to the extent practicable, the origins of any future contaminants in the delineated area. No areas of contamination were found. The conclusions of the report found that the District has done a good job protecting its sources by acquiring or permanently restricting 1054 acres of watershed, working with the Board of Health to update our Wellhead Protection District and sponsoring yearly Household Hazardous Waste Collection Days. The report recommends that the District continue to educate consumers, through its newsletters, about source protection and to work with local businesses to ensure proper storage and handling of hazardous materials. The zones of contributions to our wells are outlined on the map above. A larger more detailed map is available at the District office and the Town of Dennis Board of Health office. Additional information about the Source Water Assessment can be obtained from the Massachusetts Department of Environmental Protection at <http://www.state.ma.us/dep/brp/dws>.

Memberships The District is a member of the following organizations: American Water Works Association, Massachusetts Water Works Association, New England Water Works Association, Plymouth County Water Works Association and Barnstable County Water Utilities Association.

Our Goal *The District has provided water and water related services to consumers within the Town of Dennis for more than sixty years. We are committed to supplying our current and future customers with a safe and adequate water supply for fire protection and domestic use at a reasonable cost. We will take all practical measures to protect the water system's assets.*

How To Read This Table The table on the adjacent page shows the results of our water quality analyses. Every regulated contaminant that we detected in the water, even the most minute traces, is listed here. The table contains the name of each substance, the highest level allowed by regulation (MCL), the ideal goals for public health (MCLG), the highest level actually detected, the highest to the lowest ranges detected from all our wells, the usual sources of such contamination, footnotes explaining our findings, and a key to units of measurement. Definitions of MCL and MCLG are important.

- (MCL) Maximum Contaminant Level:** The highest level of a contaminant that is allowed in drinking water. MCLs are set as close to the MCLGs as feasible using the best available treatment technology.
- (MCLG) Maximum Contaminant Level Goal:** The level of a contaminant in drinking water below which there is no known or expected risk to health. MCLGs allow for a margin of safety.
- (MRDL) Maximum Residual Disinfectant Level:** The highest level of disinfectant (chlorine) allowed in drinking water.
- (MRDLG) Maximum Residual Disinfectant Level Goal:** The level of a drinking water disinfectant below which there is no known expected risk to health.
- (SMCL) Secondary Maximum Contaminant Level:** These levels of a contaminant are developed to protect against the aesthetic qualities of drinking water and are not health based.
- (ORSG) Mass. Office of Research and Standards Guideline:** This is the concentration of a chemical in drinking water, at or below, which adverse, non-cancer health affects are unlikely to occur after chronic (lifetime) exposure.

Water-Quality Table Notes Lead and copper are elements that occur naturally in the environment. When these two elements are found in our drinking water, it is most often the result of water interacting with materials found in plumbing, not from the water source. Since 1993, the water has been treated with potassium hydroxide to raise the pH from 5.5 to 7.0. The reason for this is to minimize the corrosion of plumbing and the consumer’s exposure to lead and copper. Due to the effectiveness of this treatment, the District has been placed on a reduced monitoring program. Since treatment began, we continue to meet the requirements of the Safe Drinking Water Act.

¹ Because of our treatment success with lead and copper the District is required to test for these elements every three years and these results are from the latest set of samples taken as indicated in the date in the table.
² Chloroform occurs naturally here on Cape Cod. Future studies by DEP are planned to determine the reasons for this.
³ Sodium can occur naturally and can also be attributed to road runoff.
⁴ The aesthetic limits for iron and manganese are .3 ppm and .05 ppm respectively.
 * Data present is from the most recent testing done in accordance with regulations. Most of the data in this table is from this reporting year, however monitoring for some contaminants is less than once a year. The last dates these contaminants were tested for are in the table.

While some of our wells exceed the levels for iron and manganese, the limits were established for aesthetic reasons and *not* for health concerns. Levels above the recommended limits have been known to cause discoloration, taste and odor problems. They have been present in our water system as long as the District has been pumping water. We continue to monitor the iron and manganese in our wells. At the April 2008 Annual District Meeting, the voters approved the construction of two Iron and Manganese removal plants. Construction is underway and is expected to be completed by the end of 2009. The plants are designed to treat approximately 8 million gallons of water per day.

IMPORTANT INFORMATION ABOUT YOUR DRINKING WATER
 Monitoring Requirements Not Met for Dennis Water District

Our water system violated drinking water standards over the past year. Even though these were not emergencies, as our customers, you have a right to know what happened and what we have done to correct this situation.

We are required to monitor your drinking water for specific contaminants on a regular basis. Results of regular monitoring are an indicator of whether or not our drinking water meets health standards. During 2008 we did not complete all monitoring or testing for Disinfection By-products (DBP) between October 1, 2008 and December 31, 2008 and therefore, cannot be sure of the quality of our drinking water during that time.

There is nothing you as our customer, need to do at this time.

The table below lists the contaminants we did not properly test for during the fourth quarter, how often we are supposed to sample for these contaminants and how many samples we are supposed to take, how many samples we took and when samples should have been taken.

| Contaminant | Required sampling frequency | Number of samples taken | When samples should have been taken |
|------------------|-----------------------------|-------------------------|-------------------------------------|
| Haloacetic Acids | 9 samples per quarter | 0 | Fourth quarter of 2008 |
| Trihalomethanes | 9 samples per quarter | 0 | Fourth quarter of 2008 |

The District is required to take quarterly samples for these contaminants because of the chlorination we do to protect public health. During the fourth quarter we missed taking these samples. While we can not confirm the quality of the water during that period of time, we are confident that there were no issues with the water quality. In fact, the historic results of tests for these two contaminants have been extremely low and generally undetected. After reviewing this with DEP representatives, and given our historically low detection results, the District has been granted a reduction in the number and frequency of samples required from quarterly to annually. Future rounds of samples will be taken annually in August and every effort will be made to avoid this oversight error in the future.

Please share this information with other people who you know drink water provided by Dennis Water District, especially those who may not have received this notice directly (for example, people living in apartments, nursing homes, or who visit our schools and businesses). You can do this by posting this notice in a public place or distributing copies by hand or mail. Your cooperation by sharing this information is appreciated.

| Contaminant | Date Tested | Unit | MCL | MCLG | Highest Detected Level | Range Lowest to Highest | Major Sources | Violation |
|--------------------------------------|-------------------------|---|----------------------------------|--------------------|------------------------|--------------------------------------|---|-----------|
| Inorganic Contaminants | | | | | | | | |
| Nitrate | 02/27/08 | ppm | 10 | 10 | 3.1 | ND - 3.1 | Runoff from fertilizer use; Leaching from septic tanks, sewage; Erosion of natural deposits | NO |
| Sodium ³ | 02/27/08 | ppm | NA | NA | 63 | 8 - 63 | Run off from use of salt on roads | NO |
| Fluoride | 02/14/07 | ppm | 4 | 4 | 0.08 | ND - .08 | Erosion of natural deposits | NO |
| Radioactive Contaminants | | | | | | | | |
| Alpha Emitters* | 07/23/02 | pCi/L | 15 | 0 | 1.3 | .9 - 1.3 | Erosion of natural deposits | NO |
| Gross Alpha Activity* | 06/27/07 | pCi/L | 15 | 0 | 0.9 | 0 - .9 | Erosion of natural deposits | NO |
| Radium 226* | 12/11/07 | pCi/L | 5 | 0 | 0.3 | 0 - .3 | Erosion of natural deposits | NO |
| Radium 228* | 12/11/07 | pCi/L | 5 | 0 | 0.7 | 0 - .7 | Erosion of natural deposits | NO |
| Volatile Organic Contaminants | | | | | | | | |
| HAA5 Haloacetic Acids | Jan - Sept 2008 | ppb | 60 | NA | 1 | ND - 1 | By-product of drinking water chlorination | Yes |
| THHM Trihalomethanes | Jan - Sept 2008 | ppb | 80 | NA | 7 | ND - 7 | By-product of drinking water chlorination | Yes |
| Unregulated Contaminants | | | | | | | | |
| Contaminant | Date Tested | Unit | SMCL | ORSG | Average Detected Level | Range Lowest to Highest | Sources | Violation |
| Chloroform ² | 04/23/08 | ppb | NA | NA | 3.5 | ND - 3.9 | By-product of drinking water chlorination | NO |
| MTBE Methyl Tertiary Butyl Ether | 04/23/08 | ppb | 20 - 40 | 70 | 0.87 | ND - 1 | Fuel additive; leaks and spills from gasoline storage tanks | NO |
| Sulfate | 02/27/08 | ppm | 250 | NA | 14 | 0 - 14 | Naturally present in the environment | NO |
| Radon* | 03/19/01 | pCi/L | NA | NA | 210 | 180 - 210 | See Radon statement | NO |
| Contaminant | Date Tested | Unit | MRDL | MRDLG | Highest Detected Level | Range Lowest to Highest | Sources | Violation |
| Chlorine | Jan - Dec 2008 | ppm | 4 | NA | 0.27 | ND - .27 | Product of drinking water chlorination | NO |
| Secondary Contaminants | | | | | | | | |
| Contaminant | Date Tested | Unit | SMCL | SMCLG | Highest Detected Level | Range Lowest to Highest | Major Sources | Violation |
| Manganese ⁴ | 02/27/08 | ppm | NA | 0.05 | 0.3 | ND - .3 | Naturally present in the environment | NO |
| Iron ⁴ | 02/27/08 | ppm | NA | 0.3 | 0.7 | ND - .7 | Naturally present in the environment | NO |
| Lead & Copper | | | | | | | | |
| Contaminant | Date Tested | 90th Percentile | # of Sites Exceeded Action Level | # of Sites Sampled | MCL (Action Level) | MCLG | Major Sources | Violation |
| Lead ^{1*} | 8/13/2008 | ND | 1 | 30 | 15 | 0 | Corrosion of household plumbing Erosion of natural deposits | NO |
| Copper ^{1*} | 8/13/2008 | 0.15 | 0 | 30 | 1.3 | 1.3 | Corrosion of household plumbing Erosion of natural deposits and leaching of wood preservatives | NO |
| Microbiological Contaminants | | | | | | | | |
| Contaminant | Date | Highest # positive samples taken in a month | Highest % Positive in a Month | MCL | MCLG | Major Sources | Violation | |
| Total Coliform Bacteria | January - December 2008 | No positive detections in 2008 | 0% | 5% | 0 | Naturally present in the environment | NO | |

Key to Table

AL = Action Level
MCL = Maximum Contaminant Level
MCLG = Maximum Contaminant Level Goal
MFL = Million Fibers per Liter
MRDL = Maximum Residual Disinfectant Level

pCi/l = picocuries per liter (a measure of radioactivity)
ppm = parts per million or milligrams per liter (mg/l)
ppb = parts per billion, or micrograms per liter (µg/l)
ppt = parts per trillion, or nanograms per liter

Total Coliform The Total Coliform Rule requires systems to test for bacteria on a regular monthly schedule based on the population served. Coliforms are bacteria that are naturally present in the environment and are not harmful themselves; however, their presence can be an indicator that other potentially harmful bacteria may also be present. We are pleased to report that during routine sampling this past year we had no detection of coliform bacteria.

Water Treatment Techniques

Corrosion Control through pH Adjustment Many drinking water sources in New England are naturally corrosive (i.e. they have a pH of less than 7.0). The water they supply has a tendency to corrode and dissolve the metal piping it flows through. This not only damages pipes but can also add harmful metals, such as lead and copper, to the water. For this reason it is beneficial to add chemicals that make the water neutral or slightly alkaline. This is done by adding any one, or a combination of several, approved chemicals. The Dennis Water District adds potassium hydroxide to its water. This adjusts the water to a non-corrosive pH. Testing throughout the water system has shown that this treatment has been effective at reducing lead and copper concentrations.

Sequestration (Iron & Manganese) Iron and Manganese are often present in groundwater at levels that can discolor the water, or cause it to take on unpleasant odors or tastes. Even though the water may still be safe to drink, treatment is often desirable. Treatment consists of adding sodium hexametaphosphate to the water. This results in a chemical reaction, known as sequestration, which prevents the iron and manganese from forming nuisance particles. Treatment at various sources has been temporarily discontinued in order to evaluate its effectiveness.

Disinfection The District uses sodium hypochlorite, also known as chlorine, in the distribution system. Initially it was only routinely used during our flushing program in the spring and fall of each year. In 2007, the Board of Water Commissioners approved year-round chlorination of the distribution system. Chlorine is added at a rate of .5 ppm as a preventative measure to eliminate any microorganisms.

All chemicals used by the District are approved for water treatment by one of the following organizations; National Sanitation Foundation International or United Laboratories, both accredited by the American National Standards Institute. Chemicals also meet performance standards established by the American Water Works Association.

Mandatory EPA Health Statement To ensure that tap water is safe to drink, the Massachusetts Department of Environmental Protection and the Environmental Protection Agency (EPA) prescribe limits on the amount of certain contaminants in water provided by public water systems. The Federal Food and Drug Administration and the Massachusetts Department of Public Health Regulations establish limits for contaminants in bottled water.

Drinking water, including bottled water, may reasonably be expected to contain at least small amounts of some contaminants. The presence of contaminants does not necessarily indicate that the water poses a health risk. More information about contaminants and potential health effects can be obtained by calling the Environmental Protection Agency's Safe Drinking Water Hotline (800-426-4791) or by visiting their general website at <http://www.epa.gov>

The sources of drinking water (both tap water and bottled water) include rivers, lakes, streams, ponds, reservoirs, springs, and wells. As water travels over the surface of the land or through the ground, it dissolves naturally occurring minerals and radioactive material, and can absorb substances resulting from the presence of animals or human activity. Contaminants that may be present in source water include:

- (A) Microbial contaminants such as viruses and bacteria, which may come from sewage treatment plants, septic systems, agricultural livestock operations, and wildlife.
- (B) Inorganic contaminants, such as salts and metals, can be naturally occurring or result from urban storm runoff, industrial or domestic wastewater discharges, oil and gas production, mining, or farming.
- (C) Pesticides and herbicides, which may come from a variety of sources such as agriculture, storm water runoff, and residential uses.
- (D) Organic chemical contaminants, including synthetic and volatile organics, which are by-products of industrial processes and petroleum production, can also come from gas stations, urban storm water runoff and septic systems.
- (E) Radioactive contaminants can be naturally occurring or the result of oil and gas production and mining activities.

Some people may be more vulnerable to contaminants in drinking water than the general population. Immuno-compromised persons such as persons with cancer undergoing chemotherapy, persons who have undergone organ transplants, persons with HIV/AIDS or other immune system disorders, some elderly and infants can be particularly at risk from infections. These people should seek advice about drinking water from their health care providers. EPA/CDC guidelines on appropriate means to lessen the risk of infection by cryptosporidium are available from the Safe Drinking Water Hotline (800-426-4791).

What does this all mean? *Our water supply is safe!* As you can see in our table, the District experienced no violations during 2008. The District takes more than 1,000 test samples for various contaminants each year as required by EPA and DEP. Some detections are made at low levels yet all were within required limits. It is not possible to include all the contaminants that we test for in the space provided; nor, is it required. A complete list can be obtained on request by contacting the District or by visiting our website.

How Will You Be Notified In An Emergency In the event of a non-acute violation, the District must submit notices within 14 days for publication in local newspapers explaining the violation. The notices will contain important information for consumers and what actions are being taken by the District to achieve compliance.

In the event of an acute violation or an immediate emergency, the District must issue a public notice for release through electronic media (radio, television, etc.) within 24 hours. The notice must explain the situation, including actions or precautions consumers may need to take. The notice will also describe the actions being taken by the District to resolve the problem. While regulations require a 24-hour public notice, our goal is to release the information as soon as possible.

This report was prepared by David Larkowski, Superintendent of the Dennis Water District. For more information call 508-398-3351.